

HISTORY MEETS CHIC



WELCOME. LOCATED IN HISTORIC AKARETLER IN THE CITY CENTER, SURROUNDED BY CAFES & ART AND DESIGN GALLERIES, W ISTANBUL IS SITUATED NEXT TO CHARMING BESIKTAS AND DOWN THE HILL FROM CHIC NISANTASI. WHERE HISTORY MEETS COSMOPOLITAN STYLE, LOCAL CUISINES MEET CREATIVE COCKTAILS AND OTTOMAN OPULENCE MEETS PULSATING BEATS.

W Istanbul serves as the centerpiece of redevelopment of the landmark Akaretler Row Houses in Besiktas. The historical Row Houses were designed in 1875 under the reign of Sultan Abdulaziz, as living quarters for high ranking officers of the Dolmabahce Palace – a symbol of magnificence of the 19th-century Ottoman Empire.

Located in Akaretler district of Istanbul, known for its destination restaurants, bars and cafes, W Istanbul is in close proximity to the Bosphorus Strait and Nisantasi, the city's most fashionable shopping district. The hotel is also a stone's throw away from Dolmabahce Palace and Istanbul Modern Art Museum and a short drive to the Old City, Sultanahmet, Hagia Sophia and the Blue Mosque.

GUEST ROOMS

140 Guest Rooms: 46 Wonderful, 15 Spectacular, 8 Marvelous, 28 Fabulous, 12 Mega, 15 Studio Suites, 11 Fantastic Suites, 1 Spa Studio Suite, 1 Marvelous Suite, 1 Cool Corner Suite, 1 WOW Suite, 1 Extreme WOW Suite.

Rooms and suites with private garden, terrace or cabana - W signature bed, pillow top mattresses and feather bed, 350-thread-count cotton blend sheets, feather and goose down duvets/pillows - Bliss bathroom amenities, terry/pique spa robes, hairdryer - in-room electronic and user friendly safe - oversized leather desk - flat screen TV - Bose Wave Radio - in-room movies on demand - caller ID voicemail - free Wi-Fi - dual-line speaker phone with conference call features - Mix bar and minibar - handicap accessible rooms available, smoke detectors and sprinklers in room, non-smoking rooms available.

WOW SUITE

Designed by renowned Turkish designer, Mahmut Anlar, the WOW Suite is one you could stay in forever. All-the-way-up-there seven-meter high ceilings and tall windows, this suite is an airy duplex complete with a separate mezzanine-level bedroom, customized living room, stunning dining room, kitchen, 1 1/2 bathrooms and modern luxuries throughout for every whim and fancy. The exclusive bedroom features skylights above the spa bath, an enormous massage shower and a four poster W signature bed. The luxurious living room features a Bang & Olufsen stereo system, and a 42" LCD flat screen TV.

COOL CORNER SUITE

Stretch our into the spacious and stylish Cool Corner Suite.

Settle in your one bedroom retreat with your separate living room. Sit back and have a sip from your balcony with an unforgettable bosphorus view.

Do you need more space?

Don't worry, a special exclusive area of 158,5 m2 can be created for you, it will combine the Cool Corner Suite (74 m²) connected to the Studio Suite (46m²) plus one Mega Room (38,5m²), all rooms feature Bosphorus view balconies and are in a private space.

Modern and sophisticated, this secluded space is all yours to stretch out and take it all in.

EXTREME WOW SUITE

Top Floor Rock Star Signature Suite! Imagine relaxing on your exclusive terrace as you take in the sunset over the Bosphorus. Imagine arriving via private lift to your own floor. You're the host with the most sophisticated dining room and bar, serving just-mixed cocktail concoctions. Recharge and sip bubbly in your room with a private traditional Turkish bath. Spectacular skylights across the Extreme WOW Suite flood the suite with sunlight and a view of the starry sky. Lounge in the two living areas' carefully hand-picked details: DJ Booth, three 42" full HD LED TVs to surround you.

WHATEVER/WHENEVER

W Istanbul's Whatever/Whenever® philosophy pampers guests with "whatever you want, whenever you want it", inviting sophisticated business and leisure travelers into a world where anything can happen.

SERVICES AND AMENITIES

FIT Fitness center with state-of-the-art equipment, B&G Wellness, 24-hour in-room dining, dry cleaning/laundry/valet services, express check-in and check-out, childcare services, P.A.W. (Pets Are Welcome).

W LOUNGE COCKTAILS / CUISINE

Make an entrance. Make it dramatic. Stride purposefully through a "Leading Tunnel" into a new environment. Reclusive and exclusive! Welcome to the W Lounge, the place to see and be seen in Istanbul.

Relish the lounge conceptualized by the likes of Mahmut Anlar and Thierry Dreyfus.

Sophistication meets relaxation, and a totally unique experience. The W Lounge décor is inspired by art and treasures from the Golden Age of the Ottoman Empire, elegantly merged with ultra-modern hints and artifacts finished with custom furnishings and stylish interiors. The Lounge, serves as a stylish centerpiece to a truly sophisticated and inspiring setting.

Enjoy the finest rhythms with Istanbul's most avant-garde DJs. Expect chill-out tracks by day, funky, electric and eclectic, mesmerizing music by night. Watch the evening evolve. Feel the temperature rise. Live the vibrancy within a truly chic ambience, as you casually sip a signature W handcrafted cocktail. Juice is freshly squeezed and our refreshing bitters and grenadine house specialties await your indulgence.

It's a place to be you, to mingle, to kick back and relax. W Lounge is Istanbul's premier bar and entertainment spot. Open from daytime till late. Just like you are!

MEETINGS & EVENTS

Innovative design meets cutting-edge technology at the new W Istanbul Studios. Right here in our 3650 square feet (340 square meters) of event space, the four W Istanbul Studios feature fully adaptable conference equipment that turn business pow-wows into exhilarating oh-wows. Creative in approach and innovative in design, W Istanbul will engage and energize attendees and participants of all meetings, soirees and fetes. Our unique set-up gets ideas flowing with mood music, signature scents and more. Where you can do anything from learning to cook Turkish meze to backgammon lessons. And if work isn't working for you, take a soothing coffee break. Delight in a menu of activities that's fun and beneficial to everyone. Perfect for work and play, when W Hotels take care of business, you'll love the results.

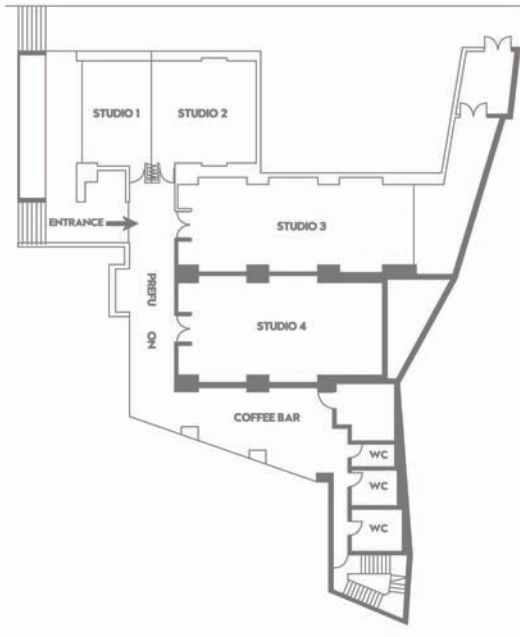
STARWOOD PREFERRED GUEST PROGRAM

Enjoy access to the award winning Starwood Preferred Guest program and to SPG.Pro, meeting and event planners, corporate and leisure travel professionals, and executive assistants can earn Starpoints and elite status for their professional booking all in one easy SPG account.

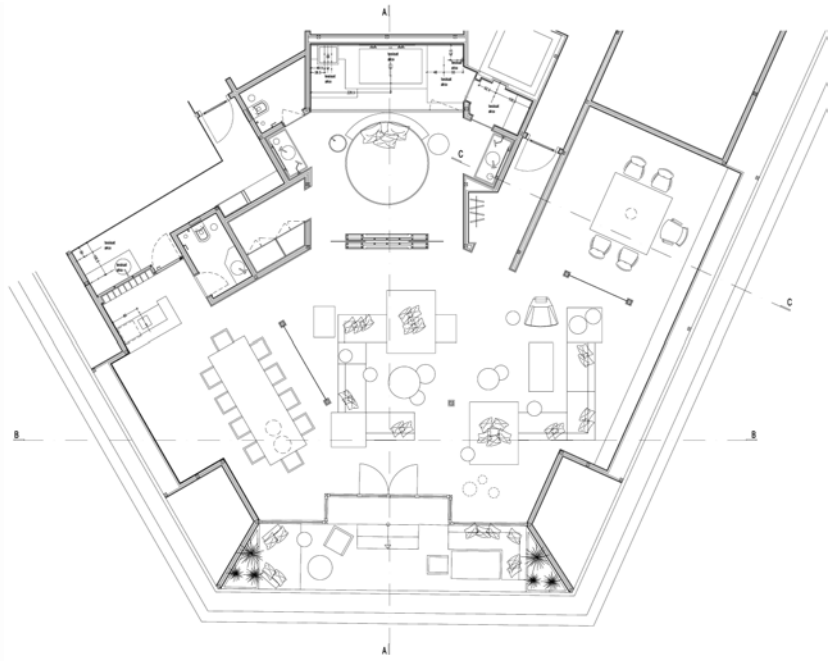


ISTANBUL

STUDIOS PLAN



E-WOW SUITE PLAN



Room	Dimension	Ceiling HT	SQ. MT.	Theatre Style	Classroom	Conference	Reception	Banquet	U-Shape
Studio 1	7 x 5	2,95	35	30	20	20	30	16	18
Studio 2	7 x 7	2,95	49	40	25	18	40	16	15
Studio 1 & 2	7 x 12	2,95	84	70	48	30	75	40	28
Studio 3	5.5 x 15	2,95 - 4	83	85	60	42	70	48	40
Studio 4	6.5 x 13	2,95 - 4	85	85	56	38	70	48	35
Prefunction	16 x 3	2,95	48	.	.	.	35	.	.
Coffee Bar	4 x 10	2,61 - 3,65	40	.	.	.	45	.	.
E-Wow Suite	.	2,95	170	25	20	25	150	18	22

WHERE TO FIND US

Suleyman Seba Cad. Akaretler,
Istanbul, Turkey 34357 tel + 90
212 381 2121
fax + 90 212 381 2199

WHOTELS.COM/ISTANBUL

